

COURSE DESCRIPTION:

Mathematics is an essential tool in almost all fields of study, and that is why you are required to take it. It can be used to solve the simplest to complex problems in the world. There are a lot of topics to cover; therefore, you can expect to devote a considerable amount of time and work to this course. Mathematics is about **THINKING** and not just numbers. I want each of you to be able to think on your own, be able to work together, be creative, and ultimately apply what you learn to become successful in life.

TEXTBOOK:

EnVision Integrated Mathematic II by Pearson

TOPICS:

- **Review:** Lcd Method, operations on square roots, exponential rules
- **Lesson 1:** 1.1 Operations on Real Numbers, 1.2 Rational Exponents and Properties of Exponents. 1.3 Exponential Models
- **Lesson 2:** 2.1 Adding and Subtracting Polynomials, 2.2 Multiplying Polynomials, 2.3 Multiplying Special Cases, 2.4 Factoring Polynomials, 2.5 Factoring $x^2 + bx + c$ $a=1$, 2.6 Factoring $x^2 + bx + c$ $a\neq 1$, 2.7 Factoring difference of two squares.
- **Lesson 3:** 3.1 Key Features of Graphs of Quadratic Functions, 3.1 Quadratic Functions in Vertex, 3.2 Quadratic Functions in Standard Form, 3.3 Quadratic Functions in Standard Form, 3.4 Modeling with Quadratic Functions, 3.5 Comparing Linear, Exponential, and Quadratic Models
- **Lesson 4:** 4.1 Solving Quadratic Equations Using Graphs and Tables, 4.2 Solving Quadratic Equations by Factoring, 4.3 Rewriting Radical Expressions, 4.4 Solving Quadratic Equations Using Square Roots, 4.5 Solving Nonlinear Systems of Equations
- **Lesson 5:** 5.1: Complex Numbers and Operations, 5.2 Completing the Square, 5.3 The Quadratic Formula, 5.5 Polynomial Identities
- **Lesson 6:** 6.1 The Absolute Value Function, 6.4 Transformations of Absolute Value Functions, 6.2 Piecewise-Defined Functions, 6.9 Inverse Functions
- **Second Semester (Geometry) :** Lessons 7.1-7.6, Lessons 8.1-8.6, Lessons 9.1-9.5, 9.7, Lessons 11.1-11.4, Lessons 12.2-12.4, Lessons 10.1-10.3

CLASS RULES:

- Bring your school ID daily.
- Students must be on time to class and be ready to learn. Be in your seat before the bell ring.
- Students will bring all materials to class.
- Students will pay attention to instruction, participate and not keep the teacher from teaching or other students from learning.
- Students will show respect toward all students and school personnel.
- Students will not bring anything to class that causes distraction from the instruction.
- Cellular phones can be a major distraction, so **turn off** your cellular phone especially during class discussion and warmups! Multiple warnings on cellphone will result with your parent picking up your cellphone in the office.
- Foods and drinks are not allowed in the classroom. Water bottle is okay and **no sharing water**.
- No hats, caps, visors, bandanas, head-coverings, etc.

Note: Multiple warnings, detentions, tardies and referrals will result a Citizenship grade: **Needs (N) to Improve or Unsatisfactory(U) student. Also, you will lose points for Participation Grade.**

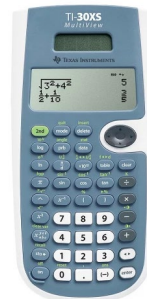
Consequences

-Consequences for breaking the rules are as follows:

- 1st offense – warning and loss of participation points.
- 2nd offense – student-teacher conference/ Detention and loss of participation points.
- 3rd offense – detention given / a call home and loss of participation points.
- 4th offense – referral to administration and loss of participation points.

CLASS MATERIALS:

- Bring textbook to class.
- Writing and note taking tools.
- **Calculator. Suggestion: TI-30XS Multiview**
- Materials are uploaded on Google Classroom.



GRADING POLICY:

GRADE DISTRIBUTION:

Homework/Classwork	20%	A 90% - Above
Assessment	55%	B 80% - 89%
Warmups/Participation	15%	C 70% - 79%
Notes	10%	D 55% - 69%
		F Below 55%

Extra credit will not be given for this class. **Please Refer to Saturday Academic School.**

Unexcused absence/tardy - Assignments and Assessments CANNOT be made up.

Homework/Classwork:

Homework/Classwork is essential to gain mastery of the concept(s). Thus, homework/Classwork assignments are expected to be completed and turned in on time. All homework/classwork must be in order and stapled together. Please begin each section with your name, title of the assignment and clearly label the problems with the final answers circled. You do NOT need to copy word problems. I will select a few problems to grade (some problems are 2 points each). Make sure to **show all work!** **NO WORK = NO CREDIT.** **Incomplete homework/classwork** may result a “zero” score.

Now a day, students are using **PhotoMath**. Please be responsible and I strongly recommend that you learn the materials. If I see that you are using **PhotoMath** or **any forms of PhotoMath** in class, you will get a **zero** for that assignment. Homework/Classwork will be collected at the beginning of class. LATE homework/classwork will be accepted for at most half-credit if it is completed. You have **1- week** to turn in late homework from its due date. Otherwise, it is a ZERO score. Please submit your late/absent assignments after class. **Full credit** for LATE CW/HW and Notes will be given for complete assignments at **Saturday Academic School.**

Note 1: Homework/Classwork are due two days from the day it was given or due on Thursday or due in class.

Note 2: At least one assignment will be graded for the week.

Assessment-Tests/Quizzes:

1. Unless it is stated on a Legal Document, I do NOT allow Re-take or Correction on Tests or quizzes. **Please Refer to Saturday Academic School for Retake on Exams.**
2. Graphing calculators are NOT permitted on assessments. Only TI-30XS Multiview is permitted on assessments.
3. The rubric will be applied to all assessments.

0 %	25%	100%
Student left the problem blank, or simply gave an answer correct or not, without showing the appropriate work.	The student’s work is for the most part correct. There may be an arithmetic error, or a problem with the format of the answer. Work is clear and easy to follow.	Student showed all required work to arrive at a correct solution. Work is clear and easy to follow.

Warmups/ Participation:

1. At least one warmup will be graded per week through Google Classroom. Unexcused tardy is a **ZERO** score for the warm-up.
2. Coming to class late without an excused note, inappropriate use of cell phones during discussion time, being disruptive in class, sleeping, not work on CW/HW during class and not following classroom/teacher instructions are part of your participation grade.

CHEATING:

Students are expected to conduct themselves ethically and honorably. It is expected that the grade a student earned is based upon work that the student has completed. Cheating is dishonesty. It harms you and other students who do not cheat. Students who are caught cheating will receive an F for that assignment.

CONTACT INFORMATION:

My telephone is (951) 736-3241 Ext. 25012

Office Hours: Tuesday and Thursday from 8am-8:20am

I wish you luck and success on ALL your classes.

Sincerely, Mr. Tran

Please read this course syllabus carefully, and if you have any questions or comment, call Mr. Tran at the high school. This slip must be signed by both the student and a parent or guardian, and returned to Mr. Tran. Please keep the syllabus for your records.

Returning this syllabus signed by your Parent(s)/Guardian is 15 homework points.

I have read and understood the above course syllabus.

Student:

Print: _____ Period _____ Date: _____

Parent(s)/Guardian

Print: _____ Signature: _____ Date: _____